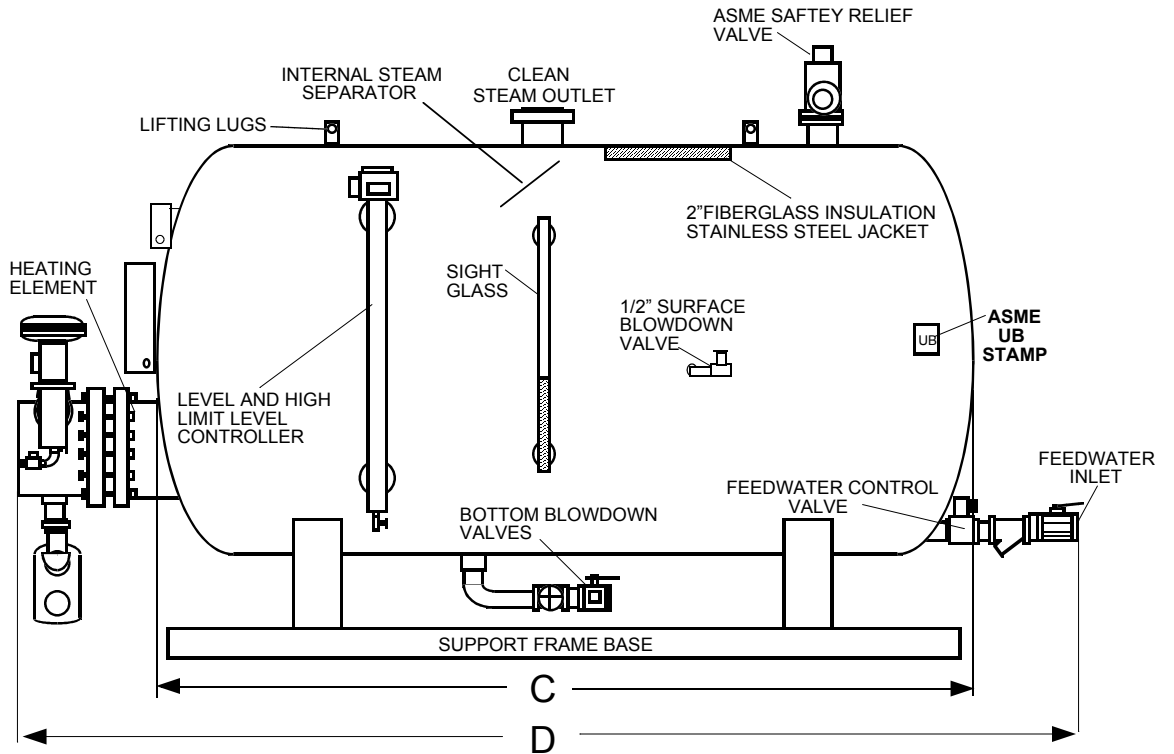
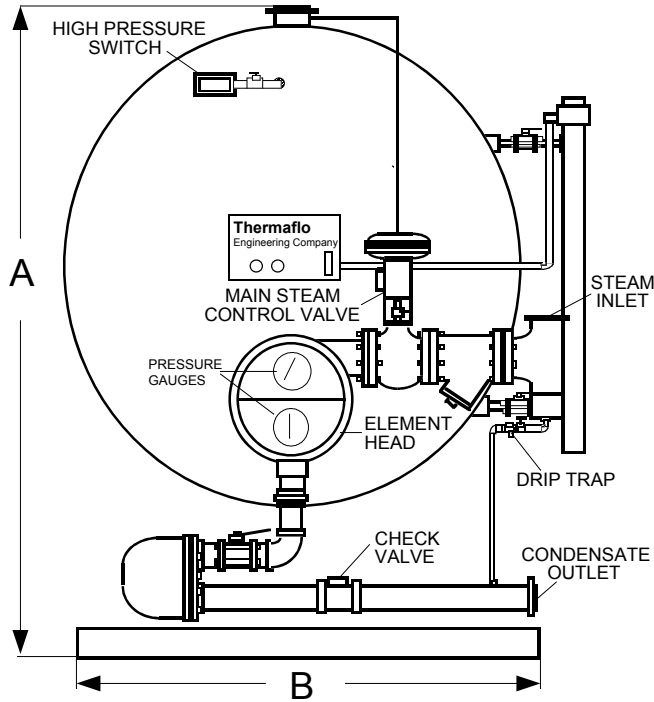




# “THCS” CLEANPAK SERIES CLEAN STEAM TO STEAM GENERATOR PACKAGE



| Model No. | Vessel Size | Dimensions in Inches |     |      |      | Source Steam Pressure  | Output Steam Pressure | 15    | 25    | 50    | 100  | 150 |
|-----------|-------------|----------------------|-----|------|------|--|-----------------------|-------|-------|-------|------|-----|
|           |             | A                    | B   | C    | D    |  |                       | 15    | 25    | 50    | 100  | 150 |
| THCS-20   | 20" X 50"   | 42"                  | 26" | 50"  | 68"  |  | 112                   | 147   | 322   | 566   | 669  |     |
| THCS-24   | 24" X 64"   | 46"                  | 30" | 64"  | 80"  | Capacities are based on an inlet makeup water temperature of 40F, fouling factor of .0005, 3/4" OD .049 wall 316L stainless steel tubes. | 218                   | 309   | 671   | 1186  | 1388 |     |
| THCS-30   | 30" X 72"   | 49"                  | 40" | 72"  | 371  |  | 523                   | 1123  | 1994  | 2289  |      |     |
| THCS-36   | 36" X 98"   | 54"                  | 44" | 98"  | 1280 |  | 1812                  | 3854  | 6654  | 7945  |      |     |
| THCS-42   | 42" X 120"  | 59"                  | 54" | 120" | 1941 |  | 2728                  | 5845  | 10213 | 11983 |      |     |
| THCS-48   | 48" X 120"  | 64"                  | 58" | 120" | 2889 |  | 4062                  | 8699  | 14954 | 17790 |      |     |
| THCS-54   | 54" X 120"  | 70"                  | 62" | 120" | 4203 |  | 5933                  | 12712 | 20122 | 20984 |      |     |
| THCS-60   | 60" X 120"  | 76"                  | 70" | 120" | 4310 |  | 6121                  | 13234 | 21453 | 21990 |      |     |

Thermaflo Engineering Company Inc. Charlotte, North Carolina 28247 Phone (704) 940-1228  
 Manufacturing Facilities: 12243 Nations Ford Road Pineville, North Carolina 28134